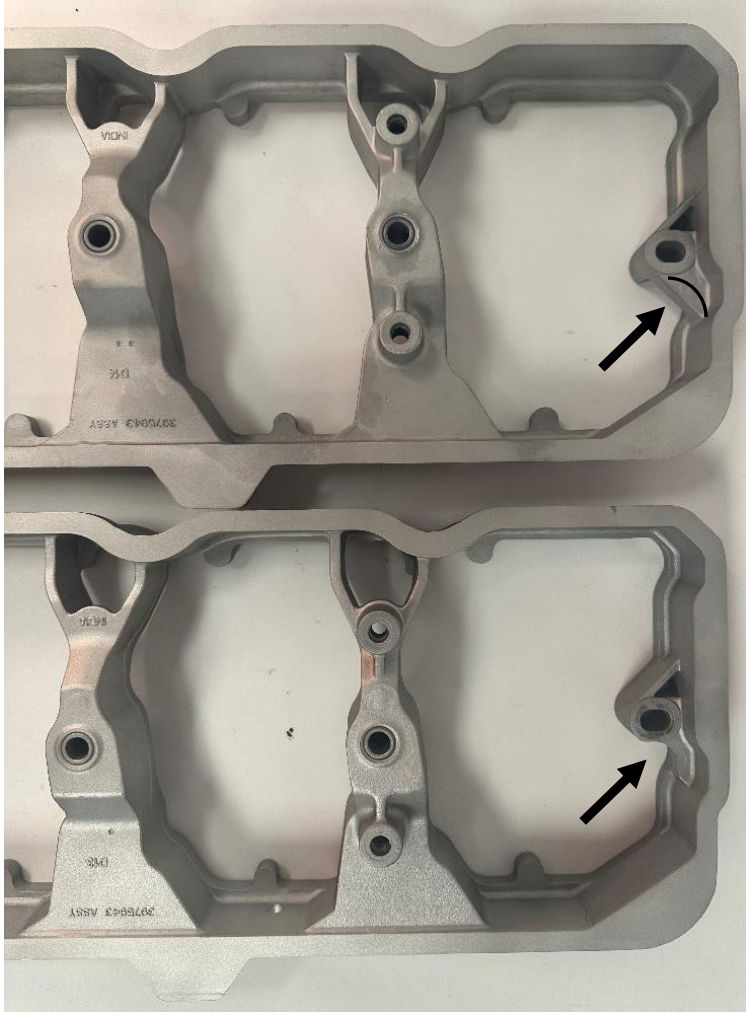
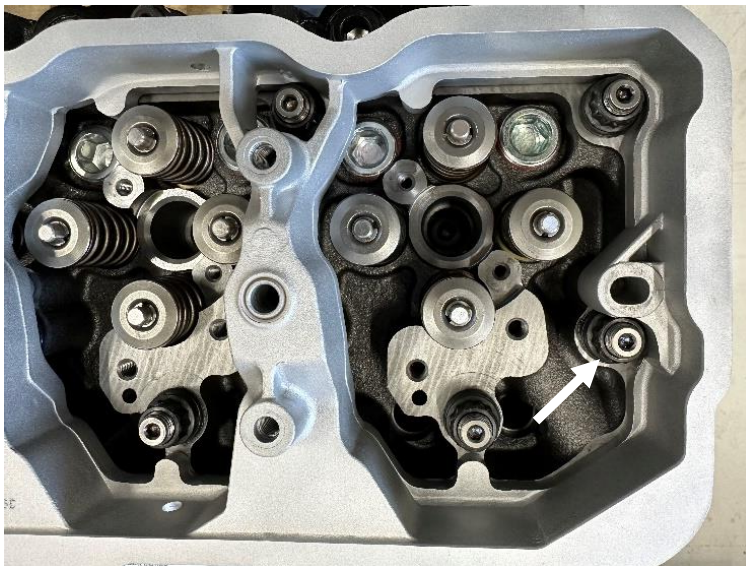


NOTICE: This long block utilizes head studs in place of the factory head bolts. Machining and clearance of the lower rocker box cover **is required** to provide clearance for the head stud and nut. Failure to machine the necessary clearance will result in an interference with the head stud, resulting in a rocker box that does not fully seat with the cylinder head, allowing for an oil leak to occur. Clearance the rear most portion of the rocker box cover around the stud location identified using a 1" end mill as shown in the images below.



Original lower rocker box with clearance area outlined.

Modified lower rocker box cover with clearance around the rear center stud location.



Installed rocker box with clearance around the rear center stud and nut.