

INSTALLATION INSTRUCTIONS

PRODUCT: ALL LIGHTS ON®

FPE-2020-6
Revised May, 2024
Page 1 of 3

INSTRUCTIONS FOR: 2013-2016 Chevrolet Trax

ESTIMATED INSTALLATION TIME: 30 minutes

TOOLS REQUIRED: Knife, Pliers

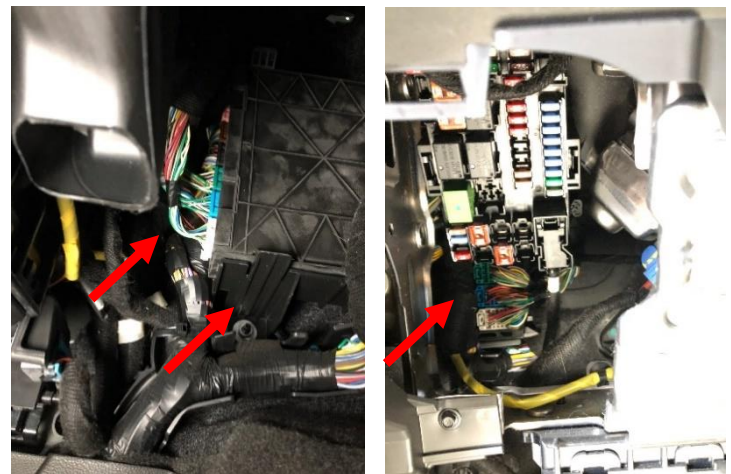


STEP 1: The Body Control Module (BCM) is located under the dash on the driver's side of the vehicle. To gain access to the BCM, remove the lower knee bolster of the dash of the vehicle. Remove three Phillips head screws and gently pull the dash panel outward. You can leave the OBD connector body attached to the lower dash panel and leave the panel on the floorboard while installing the All Lights On.



STEP 2: To allow for access to the connectors on the BCM you must remove the BCM from its secured position. Release the two retaining tabs on the bottom and front of the BCM by gently pushing them down while simultaneously pulling the BCM outward.

The BCM will have 7 connectors, each a different color. You will be removing the brown connector to install the All Lights On. To improve access, you will also need to remove the lower three connections, which are green, blue, and white. This will allow for easier access to the Brown connector and its wires.

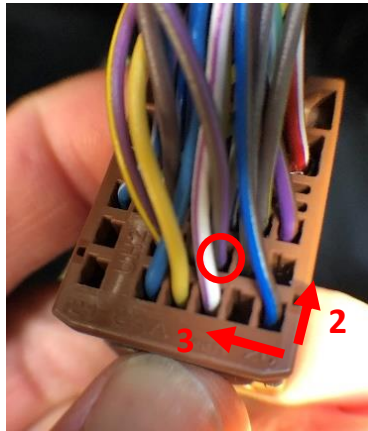


STEP 3: Disconnect the brown connector from the BCM. Cut and remove any tape or wrap to expose enough of the wires to install the All Lights On module (3-4 inches). The Brown connector is most easily accessed through the fuse block access area.

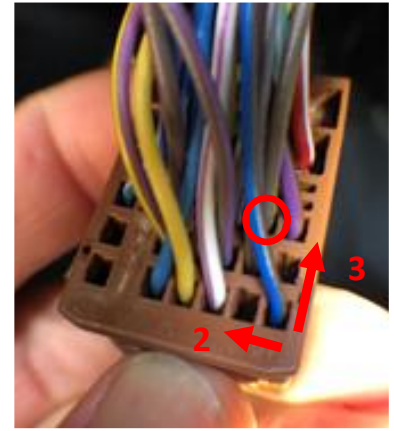
INSTALLATION INSTRUCTIONS

STEP 4: Locate Pin 18 (high beam control). The wire is *brown with a purple stripe*. From the bottom right side of the connector, count over 3 pins and up 2 pins to locate the wire. Route this wire through the circuit board and connection labeled "highs".

STEP 5: Locate pin 13 (fog lamp control). The wire is *brown with a white stripe*. From the bottom right side of the connector, count over 2 pins and up 3 pins to locate the wire. Route this wire through the circuit board and connection labeled "fogs".



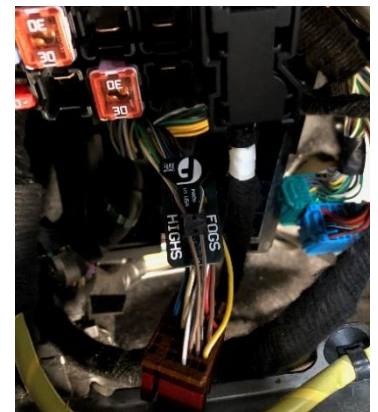
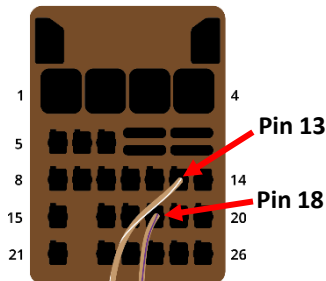
Pin 18: High Beam Signal



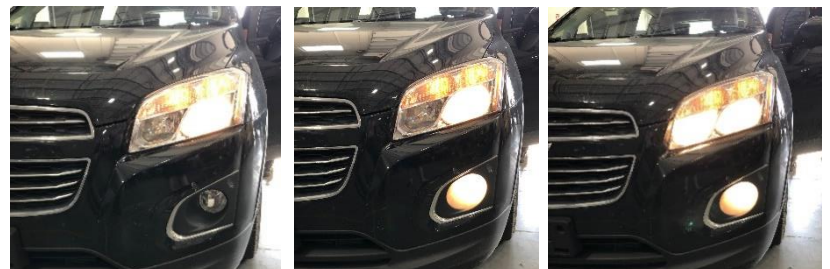
Pin 13: Fog Lamp Signal

STEP 6: With correct wires routed through the All Lights On circuit board and connector (double check your wires and pins). Position the small black cover over the wires and squeeze it downward with a pair of pliers to force the wires into the insulation displacement prongs. Install the brown connector back into the BCM. Install any other connectors that were removed.

NOTE: The connector cover is a one-time use part. Double check the pin locations before installing the cover, it cannot be removed and re-used.



Operation: low beams and fog lights will operate normally, when high beams are activated, the fog lamps and low beams will remain on.



INSTALLATION INSTRUCTIONS

TROUBLESHOOTING

If you experience any problems with the operation of the All Lights On:

- 1.** Verify that the proper pins have been selected on the proper connector of the Body Control Module or Lighting Control Module. Recount pin locations as identified in steps 4 and 5. **DO NOT** go by wire color, as this can vary across models and applications.
- 2.** Confirm you have properly seated the connector cover with a pair of pliers. The insulation displacement type connector that is utilized must pierce the wire sheathing and make contact with the copper wire. If the wire sheathing is not properly pierced, a connection cannot be made.
- 3.** Test operation with the engine running and high beams enabled. Not all models of vehicles will provide power to the fog lamps in the accessory position.